

Note
 This Zone of Theoretical Visibility (ZTV) has been generated using ESRI ArcGIS Spatial Analyst extension. The digital terrain model (DTM) has been derived from OS Terrain 50 dataset (4m RMSE) up to 40 km from turbine locations. Earth curvature has been included in the ZTV calculation and refraction of light has been applied using SNH guidance settings. The ZTV has been generated from a viewing height of 2 m above ground level which falls within recommendations by Visual Representation of Windfarms prepared for Scottish Natural Heritage (SNH) February 2017 - Version 2.2.

The use of ZTV mapping at this stage is limited and the following assumptions should be noted:

- The ZTV has been generated using the proposed turbine locations for Mid Hill Wind Farm.
- The proposed turbine blade tip height of 122.5m has been used for generating the ZTV.
- The ZTV is generated from a bare earth terrain and does not account for the screening effect of features within the landscape such as settlements and woodland. It does not indicate potential visual effects or show the likely significance of effects. It shows potential theoretical visibility only.
- The ZTV has been produced for the purpose of informing 'on the ground' visual assessment.
- The ZTV colour palette has been specifically developed to assist viewers with reduced sensitivity to red, green and blue light.

Legend

- Site Boundary
- Turbine Location
- Turbine Location 5 km Buffer
- Turbine Location 10 km Buffer

Listed Buildings (Grade)

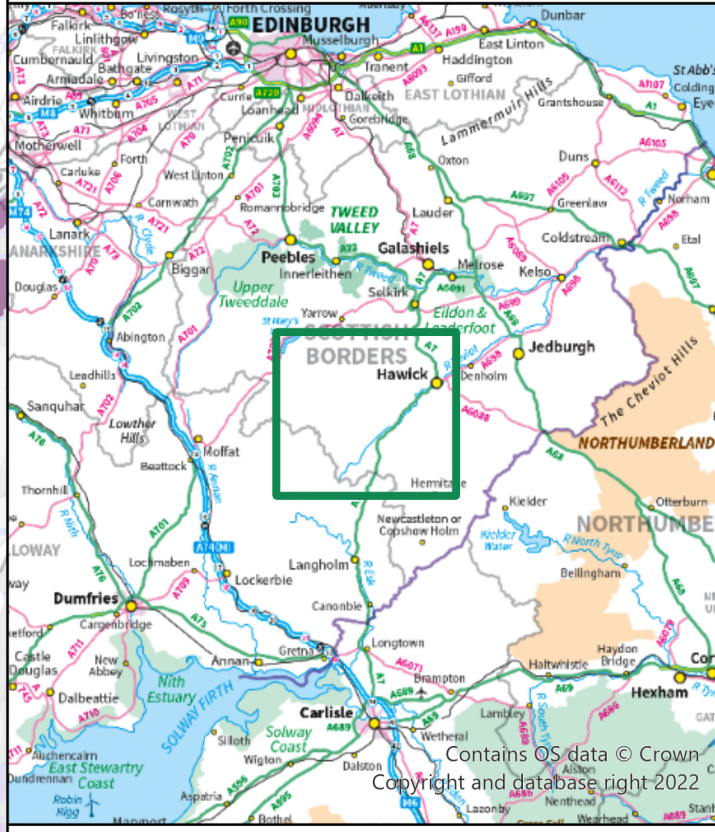
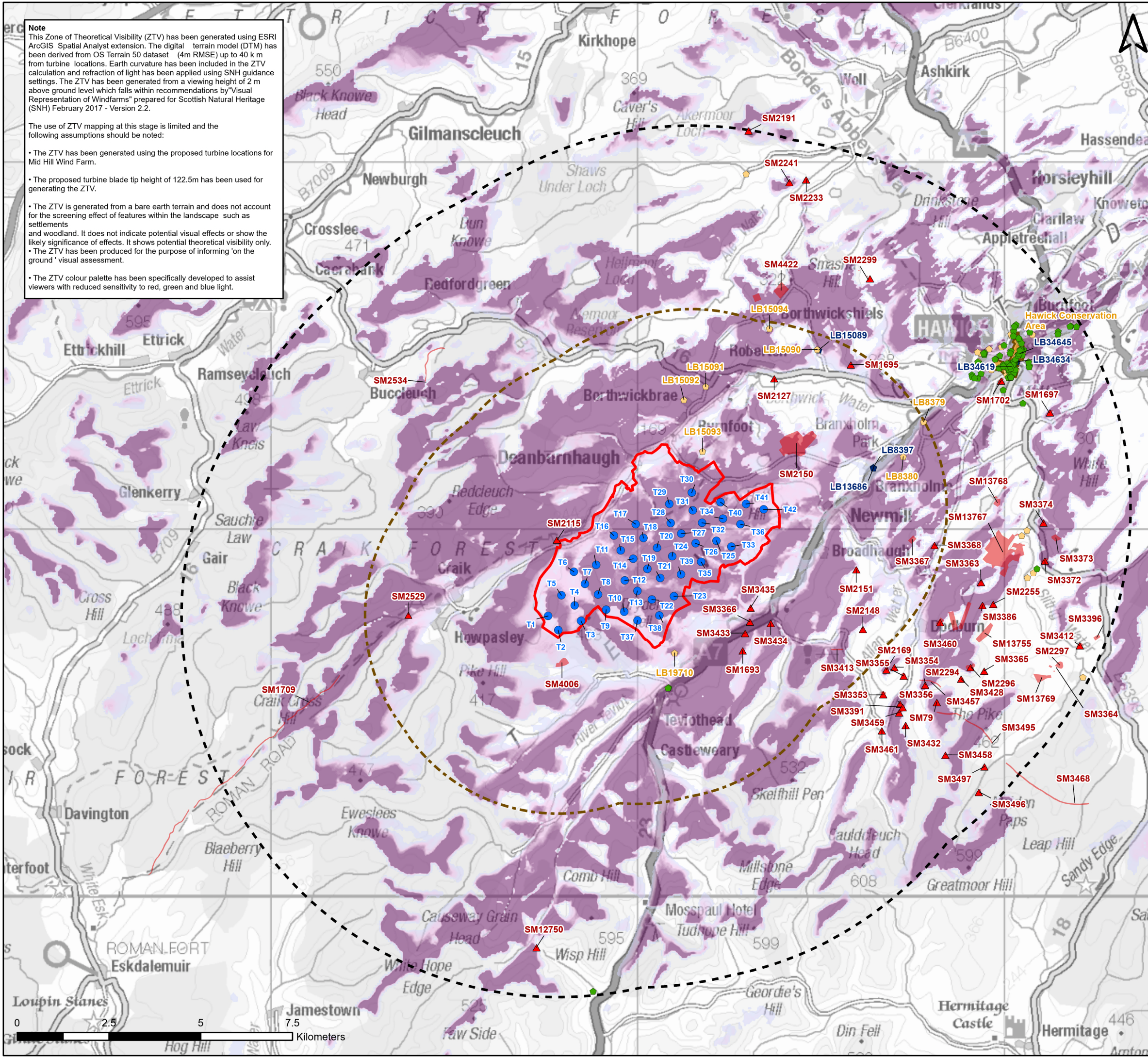
- A
- B
- C
- Scheduled Monuments Centroid

Conservation Area

- Conservation Area
- Scheduled Monument

Zone of Theoretical Visibility (Bare Earth): Number of Turbine Blade Tips Visible Value

- High : 42 Turbines Visible
- Low : 1 Turbine Visible



Scoping Report

Mid Hill Wind Farm
 Scottish Borders, Scotland, UK

Designated Heritage Assets
 Figure 7.1

Contains OS data © Crown Copyright and database right 2024.

Scale @ A3	1:100,000	Invenergy
Rev.	0	
Rev. Date	07/08/2024	